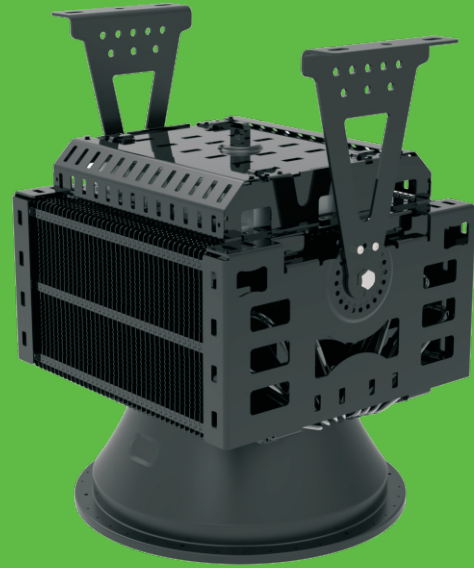


# High Mast Light

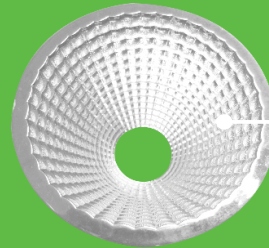
## H Series 800W~1500W High Mast Light



www.chinastreetlight.com



Copper Heatpipe

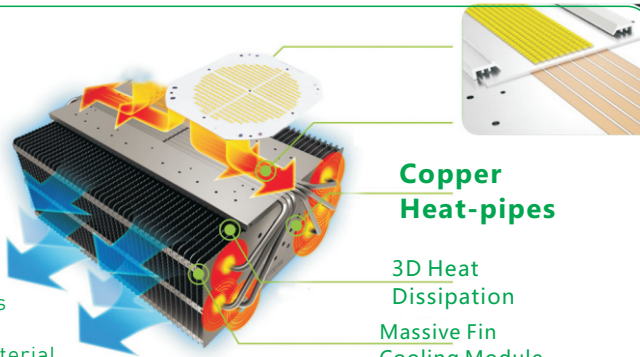


Professional light distribution

25° 45° 60° 90°

**Efficient Copper Heat pipe** contacts directly with the heat source in Zero distance

Copper heat conductivity coefficient could Reach the order of magnitudes of 10 W/m.K, which is hundreds times and even thousands time of common metallic material.



**Copper Heat-pipes**

3D Heat Dissipation  
Massive Fin Cooling Module

### Product Features:

By riveting the copper heat pipe to Fins has 20 times of heat transfer rate over pure aluminum radiator, which helps maximize the cooling area through a combination with the seamless fitting and Fin fastening, massive Fins technology;

Adopting stainless steel parts and components, the whole structure has been treated with protection technology and undergone a 500 hours salt spray test, which boasts outstanding resistance to corrosion and rust and is thus adaptable to poor outdoor environment, It passed the professional wind tunnel test, anti-level-17 hurricane;

Protection Grade Reaches IP66;

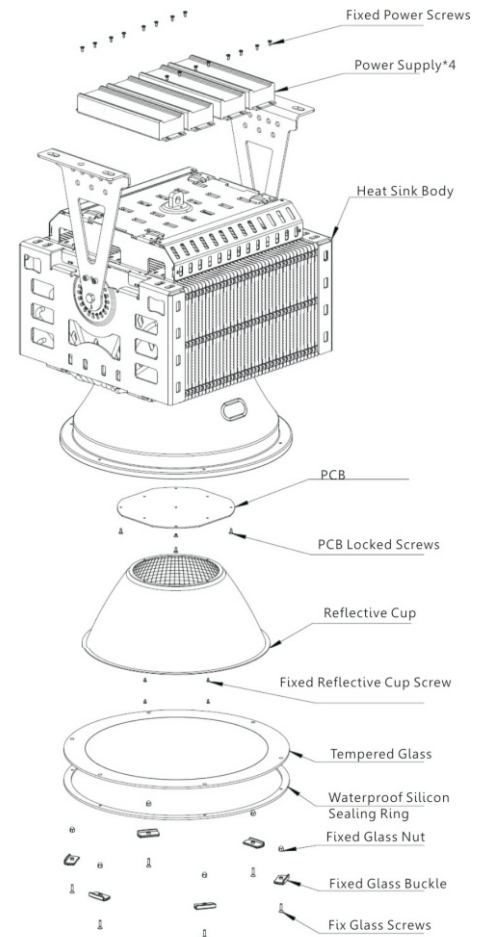
With an adjustable angle of 240°, the beaming angle could be adjusted freely.

### Professional Light Distribution

Has the light distribution options of 25° / 40° / 60° / 90° , with internal pure aluminum reflector which effectively suppresses glare and spill light.



**Respirator Design**  
Built in respirator to clear away the mist and avoid dewing;

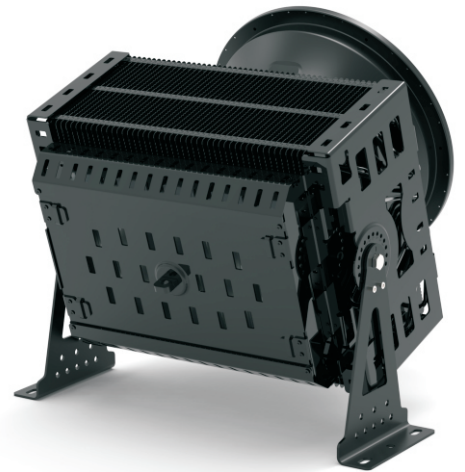
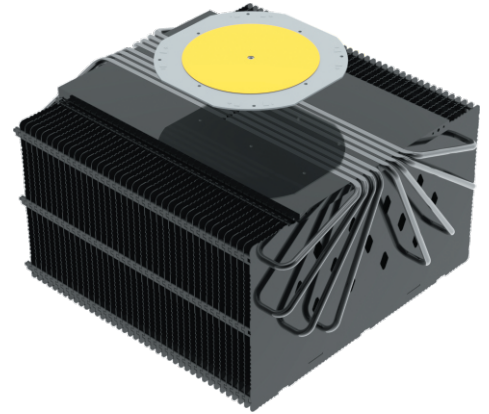




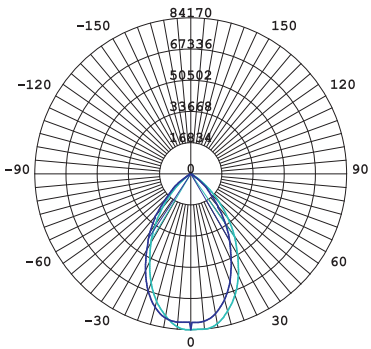
## H Series 800W~1500W High Mast Light

### Basic Parameter:

Item	GTL-BF800W	GTL-BF1000W	GTL-BF1500W
Photo			
LED Qty	420pcs	504pcs	760pcs
LED Chip	Cree XTE	Cree XTE	Cree XTE
Luminous Efficiency	>140lm/W		
Dimension	L482*W445*H507mm	L558*W445*H507mm	L653*W445*H507mm
Weight	27kg	30kg	35kg
IP Rating	IP66		

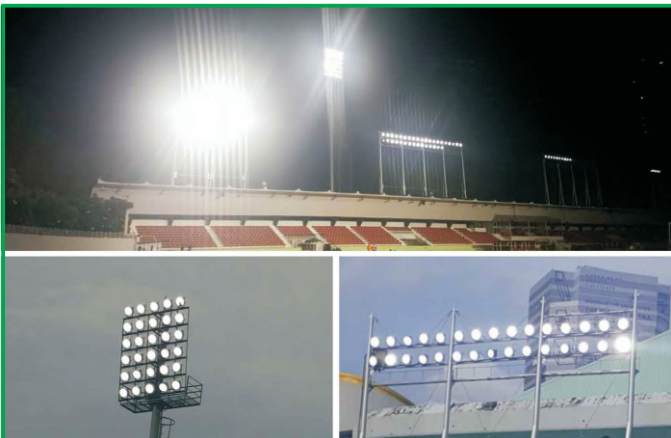
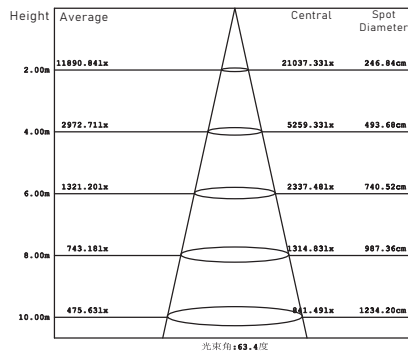


### 1000W 45° Light distribution curve

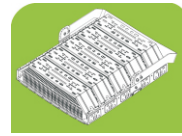


平均光束角 (50%) : 64.5度

### 1000W 45° Illumination curve



# High Mast Light



www.chinastreetlight.com

## F Series 200W~1000W High Mast Light



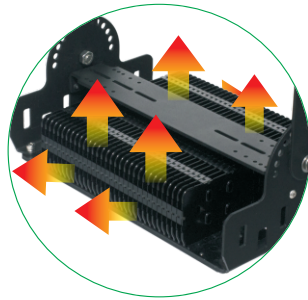
Professional Light Distribution  
Anti-Glare Lens



SMD 5050 Philips Chip  
220Lm/W



The Bracket Angle could  
be adjustable angle of 216°.



Punching production technology  
for Massive Fins, Materials is  
1050 high thermal conductivity  
Aluminum, the thermal conductivity  
is 220W/m.K, Internal and External  
Ventilation Air Flow Design;  
Shell by anodic oxidation, durable.



Meanwell Power Driver,  
5 Years Warranty,  
and Waterproof Connector



# High Mast Light



www.chinastreetlight.com

## F Series 200W~1000W High Mast Light

Item	GTL-TGH200W	GTL-TGH400W	GTL-TGH600W	GTL-TGH800W	GTL-TGH1000W
Luminous Efficiency	>140lm/W	>135lm/W	>140lm/W	>140lm/W	>140lm/W
LED Qty	96pcs 5050 /260pcs 3030	192pcs 5050/520pcs 3030	288pcs 5050/780pcs 3030	384pcs 5050/1040pcs 3030	480pcs 5050/1300pcs 3030
Dimension	L166*W566 *H308mm	L241*W566 *H308mm	L366*W566 *H308mm	L491*W566 *H308mm	L616*W566 *H308mm
Photo					
Beam Angle	15°*15° / 30°*30° / 60°*60° / 90°*90°				
CRI	>80				
Warranty	5 Years				
LED Chip	Philips 5050 / Philips 3030				
Input Voltage	AC85-265V , 50-60Hz				
IP Rate	IP66				

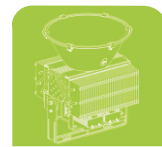
Item	Metal Halide Lamp	LED High Mast Light
Rated Power	2000W	400W Saving 75% Electric Charge
Life Span	8000~12000 hours	50000 hours 6 Times of Long Lifespan
Starting Current	Very High	Low
Start Time	5~10min	Instant start
Ultraviolet Ray content	34%	None
Mercury Content	30mg	None
CRI	≈60	>80

### Scope of Application:

Widely used in stadium, wharf, golf course, Construction sites, Tower Cranes, Docks and square, it can replace HPS lamp with 2000W and more.

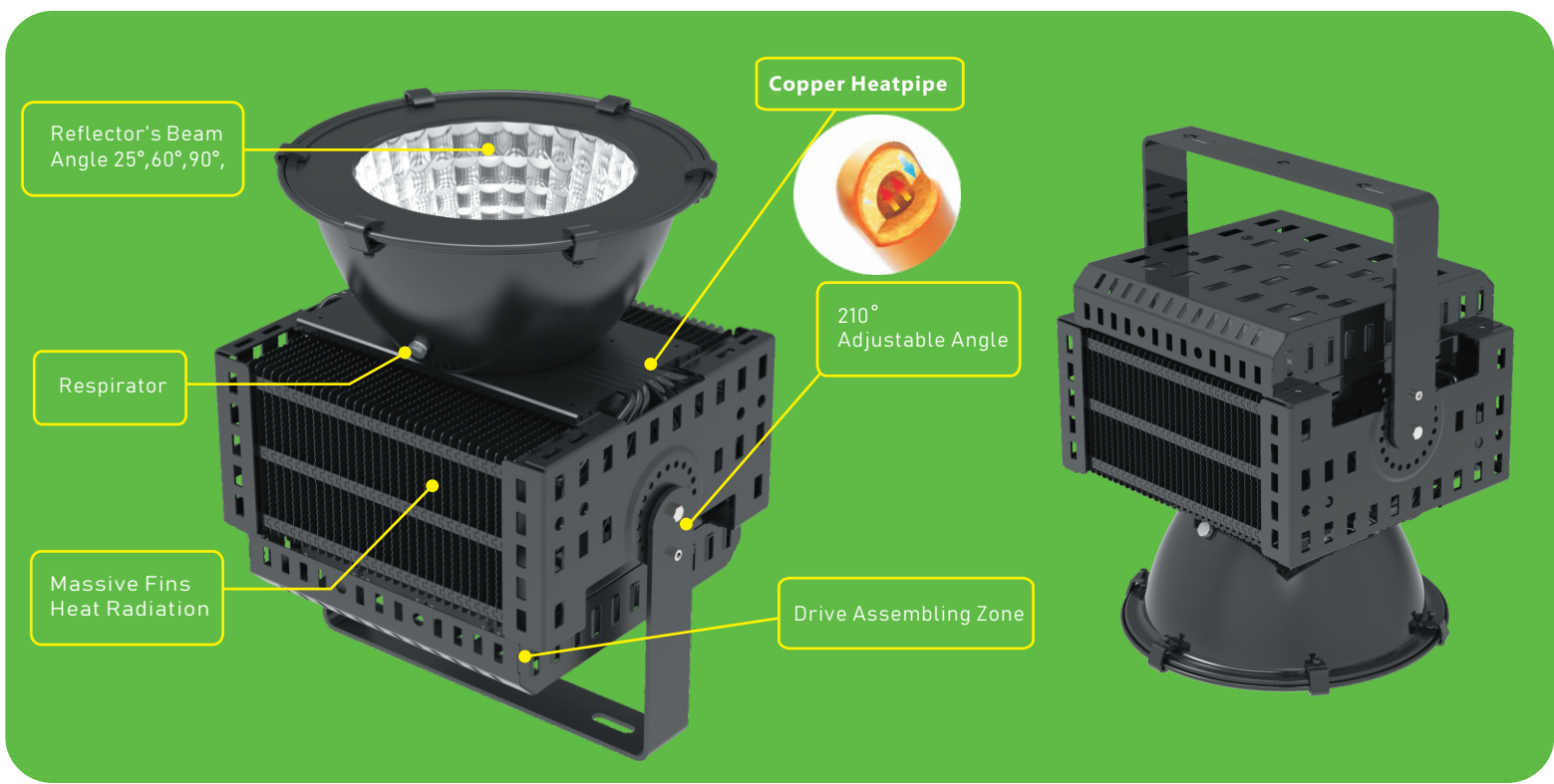


# High Mast Light



www.chinastreetlight.com

## H Series 100W~600W High Mast Light



**Respirator Design**  
Waterproof Design, Eliminating mist, Avoiding condensation. Protection Grade Reaches IP67.

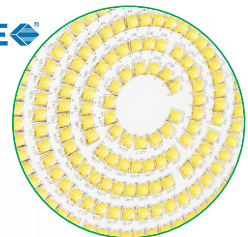
Bracket Angle, Mounting Bracket is with 13 Adjustable Point, adjustable angle of 216°.

Adopting stainless steel parts and components, the whole structure has been treated by oxidation and undergone a 500 hours salt spray test, which boasts outstanding resistance to corrosion and rust and is thus adaptable to poor outdoor environment;

**Professional Light Distribution**  
With anodizing and polishing Scale type Purity Aluminum Reflectors, High reflectivity and to Reduce the glare to a minimum, Multiple choices for reflectors: 25°, 60°, 90°; >93% Reflective Rate

By riveting the copper heat pipe to Fins has 20 times of heat transfer rate over pure aluminum radiator, which helps maximize the cooling area through a combination with the seamless fitting and Fins fastening.

It passed the professional wind tunnel test, anti-level-17 hurricane;

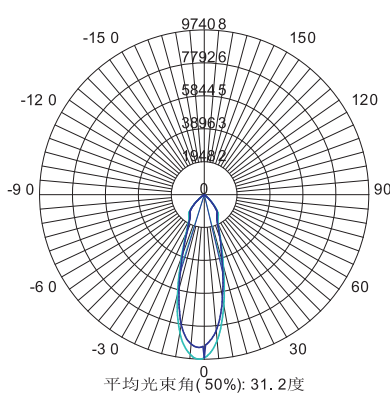


Efficient copper heat pipe contacts directly with the heat source in zero distance

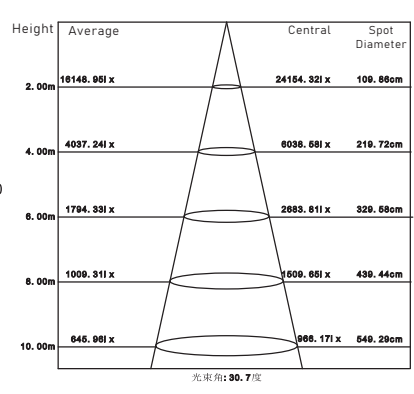


Copper Heat-pipes  
3D Heat Dissipation

500W 25° Light distribution curve



500W 25° Illumination curve




# High Mast Light




www.chinastreetlight.com

## 100W~600W High Mast Light


### 120W

	Model	GTL-H120W	Size	Φ374*456mm
	LED Chip	Cree XTE	Weight	6.4kg
	LED Qty	50pcs	Warranty	5~7 years
	Luminous Efficiency	>120lm/W	Power Supply	Meanwell HLG
	IP Rating	IP67	Input Voltage	AC85-265V


### 150W

	Model	GTL-H150W	Size	Φ374*456mm
	LED Chip	Cree XTE	Weight	6.6kg
	LED Qty	75pcs	Warranty	5~7 years
	Luminous Efficiency	>120lm/W	Power Supply	Meanwell HLG
	IP Rating	IP67	Input Voltage	AC85-265V


### 200W

	Model	GTL-H200W	Size	Φ374*486mm
	LED Chip	Cree XTE	Weight	8kg
	LED Qty	100pcs	Warranty	5~7 years
	Luminous Efficiency	>120lm/W	Power Supply	Meanwell HLG
	IP Rating	IP67	Input Voltage	AC85-265V


### 300W

	Model	GTL-H300W	Size	Φ374*486mm
	LED Chip	Cree XTE	Weight	9.2kg
	LED Qty	160pcs	Warranty	5~7 years
	Luminous Efficiency	>120lm/W	Power Supply	Meanwell HLG
	IP Rating	IP67	Input Voltage	AC85-265V

### 400W

	Model	GTL-H400W	Size	Φ374*515mm
	LED Chip	Cree XTE	Weight	12.8kg
	LED Qty	200pcs	Warranty	5~7 years
	Luminous Efficiency	>120lm/W	Power Supply	Meanwell HLG
	IP Rating	IP67	Input Voltage	AC85-265V

### 500W

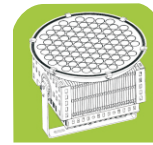
	Model	GTL-H500W	Size	Φ374*516mm
	LED Chip	Cree XTE	Weight	13.5kg
	LED Qty	220pcs	Warranty	5~7 years
	Luminous Efficiency	>120lm/W	Power Supply	Meanwell HLG
	IP Rating	IP67	Input Voltage	AC85-265V

### Scope of Application:

It's extensively applied in Industrial Workshops, Stadiums, Docks, Golf Courses, Construction Lighting Square...etc. It can replace the traditional metal halide lamp and high pressure sodium light.

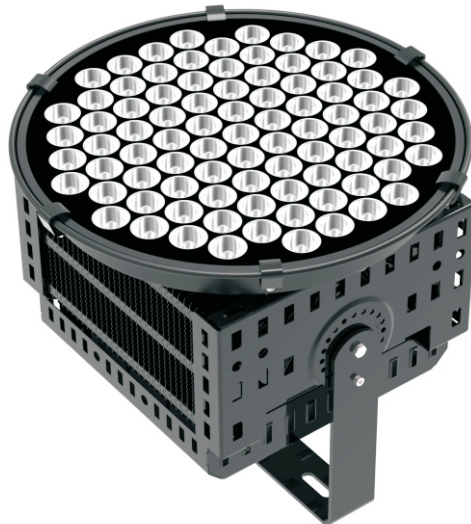
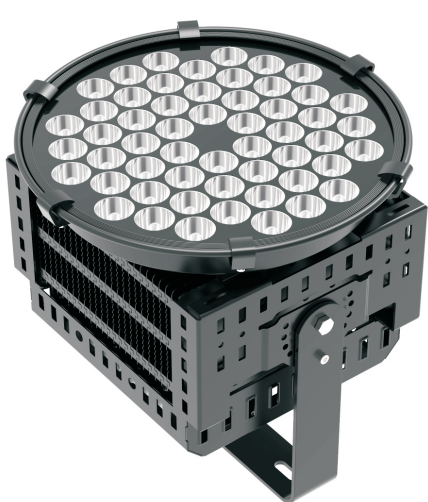


# High Mast Light



## TS Series - 300~500W High Mast Light

www.chinastreetlight.com



Professional light distribution

5° 10° 20° 30° 60°

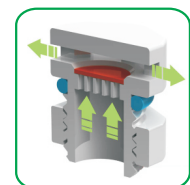
### Professional Light Distribution

With Professional Design Philosophy of Projection Light, Reflection Cup choices are available with angles such as 5°, 10°, 20°, 30°, 60° to meet the need for projection application.

The projection distance of the 5° Beam Angle can reach 500m.



### Copper Heatpipe



### Respirator Design

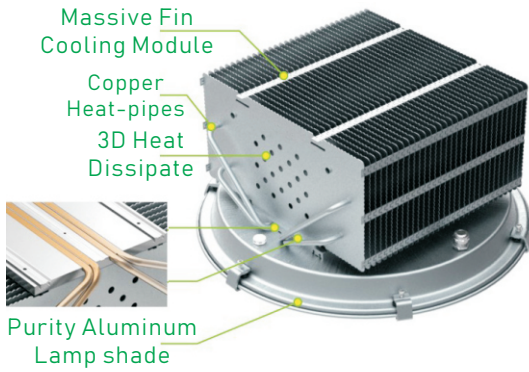
Built in respirator to clear away the mist and avoid dewing;

# High Mast Light



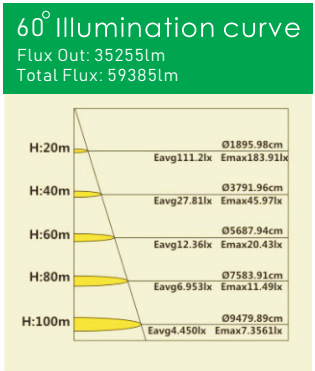
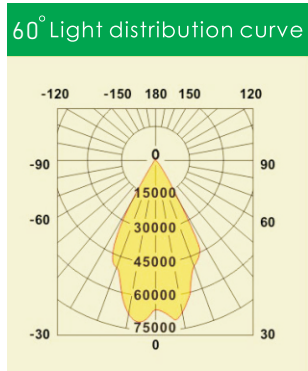
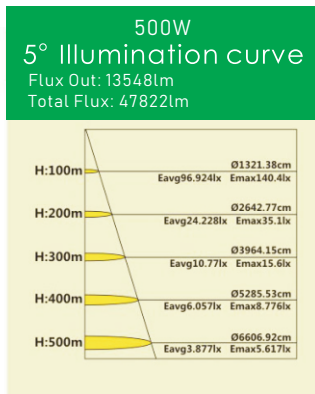
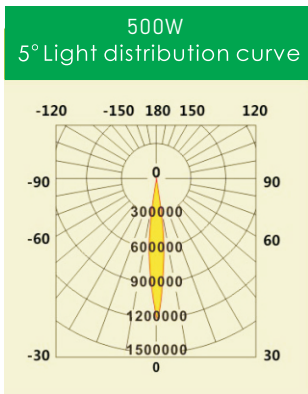
www.chinastreetlight.com

## TS Series - 300~500W High Mast Light



### Basic Parameter:

Item	GTL-TS300W	GTL-TS500W
Photo		
LED Qty	54pcs	84pcs
LED Chip	Cree XM-L2	Cree XM-L2
Luminous Efficiency	> 140lm/W	
Dimension	Φ369*H356mm	Φ471*H407mm
IP Rating	IP65	



### Scope of Application:

It's extensively applied in Skyscrapers, Casino, Bridges, Docks, TV Towers and Sculptures etc... and for the boat Fishing Lamp.

